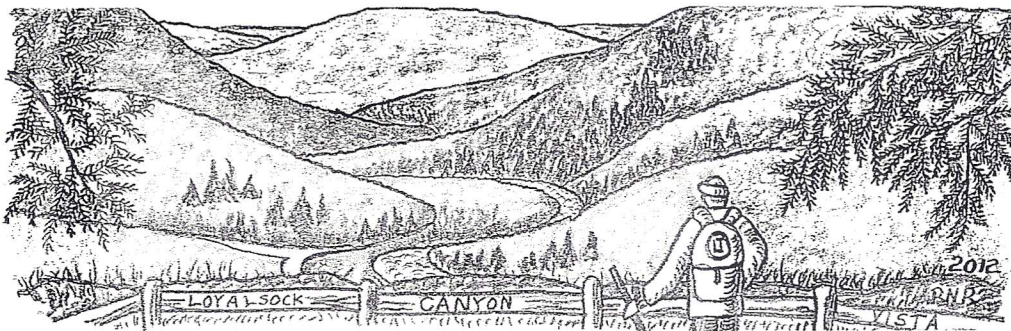


Loyal to the 'Sock

February 2013



"Don't it always seem to go that you don't know what you've got til it's gone..."

Big Yellow Taxi by Joni Mitchell, 1969

Hello, LCWA Members!

I am optimistic that the worst of winter weather is behind us, and spring will soon be here. The LCWA had a busy year last year, and we already have a number of open meetings and projects planned for this year. Hope you enjoy our first newsletter of 2013.

As ever, Carol Kafer

LCWA President

LCWA OPEN MEETINGS -- Mark Your Calendar

We will announce locations and times of our open meetings in the Williamsport Sun-Gazette and in the Sullivan County Review. Members will receive a personal reminder by postcard or email.

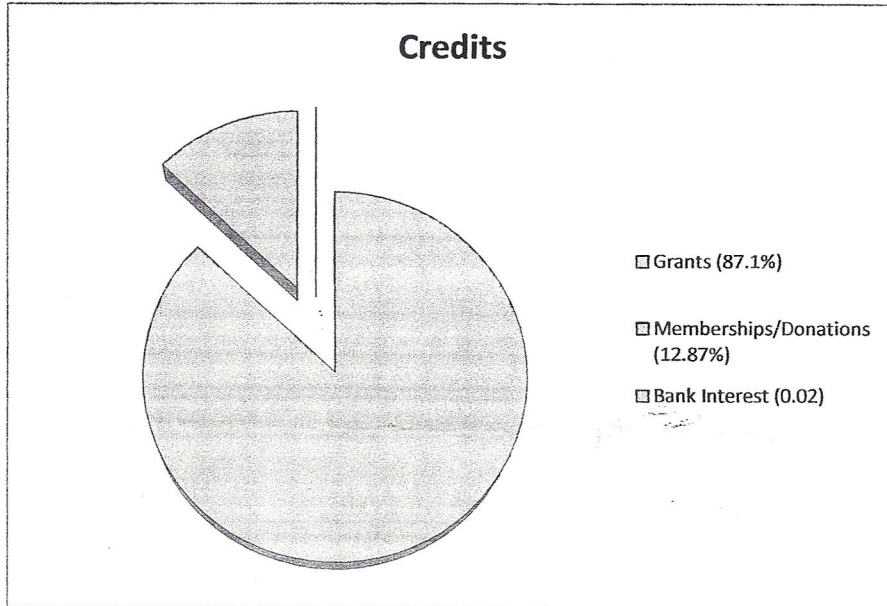
Tuesday, March 26th: What's happening in the Watershed? Here is an opportunity to find out more about watershed projects and future plans and a chance to meet the LCWA Directors and members. LCWA memberships will be available at the meeting. Come and bring your friends. This is an excellent time to share your hopes and concerns for our Watershed.

Tuesday, April 23^d: Flooding: What can we do to keep the damage from getting worse? Dr. Robert Cooley (Pennsylvania College of Technology) will present a program on the hydrology of our watershed and the practices that contribute to flooding. The presentation includes images of consequences of flooding on the main 'Sock and Little Bear Creek.

Tuesday, May 28th: We have a tentative meeting scheduled at World End State Park. So many people attended our meeting at World's End last year that we ran out of chairs.

Tuesday, July 23^d: Annual LCWA Picnic

Where does the money go?

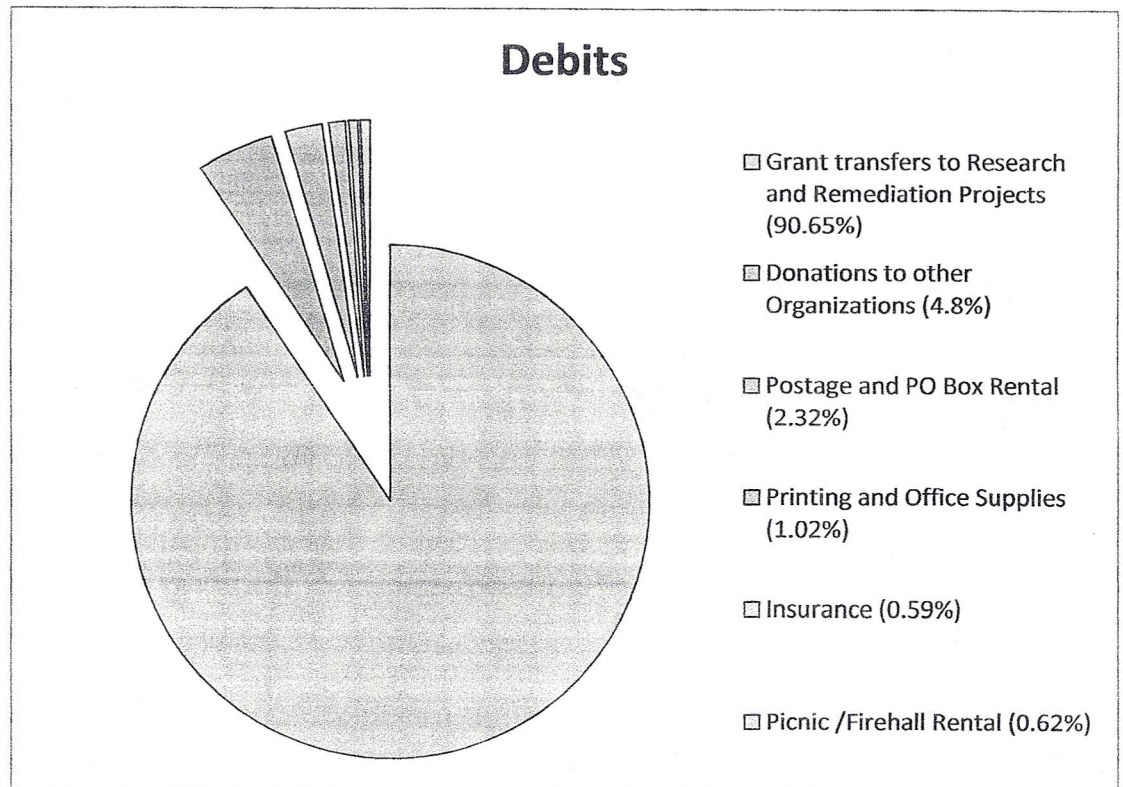


Have you ever wondered about the financial aspects of the LCWA? Where do we get the money to fund our various projects and how are your membership dues and donations spent? Treasurer Wendy Etzel completed the 2012 Financial Report and here are the facts.

In 2012, most of our income came from grants. The LCWA received grants from the Community Foundation of the Alleghenies, the National Fish and Wildlife Foundation, the Eastern PA Coalition for Abandoned Mine Reclamation and an organization that wishes to remain anonymous. Membership dues, donations and bank interest provided the rest of our income.

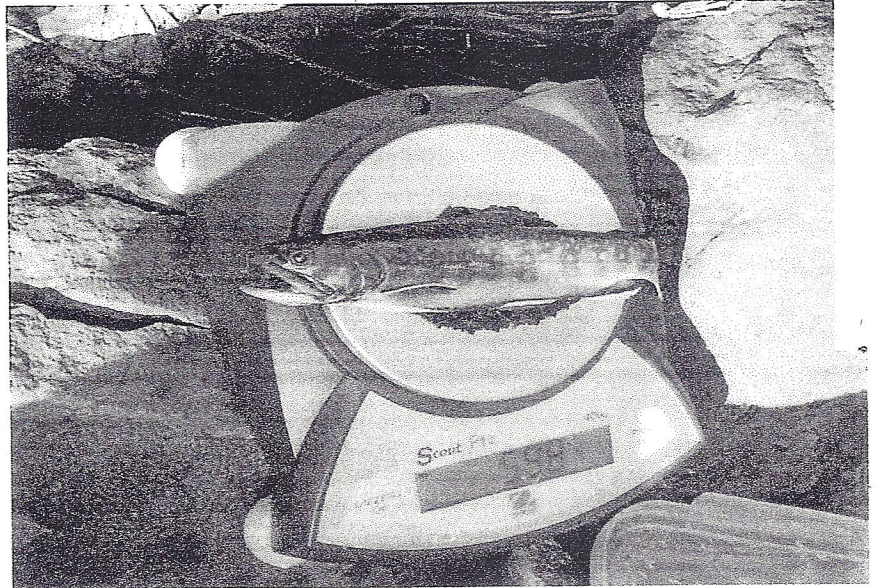
All of the grant money we received was invested in the Un-assessed Waters Project, the Recovery of Aquatic Communities Project, and the Limestone Mine Acid Remediation Project. Dr. Jonathan Niles and Corey Richmond played key roles in writing the applications for these grants and completing the work.

In past years, the Directors of the LCWA have unanimously voted to donate funds to other organizations that have helped the LCWA achieve its Objectives, as stated in our Bylaws. This past year, about 5% of our expenditures went to support organizations that benefit our Watershed. For their efforts to help Watershed residents recover from the September 2011 flood, donations were made to the following Fire Departments: Mildred, Eldred, Dushore, and Forksville. (Plunketts Creek Fire Department received a donation in 2011). We also donated to Clinton County CleanScapes to support their flood clean-up projects and to the Building Your Future - Green Career Day for their efforts in educating our future watershed stewards. Last but not least, we donated to Penn Future and the PA Environmental Defense Fund for their positive influence at the legislative level.

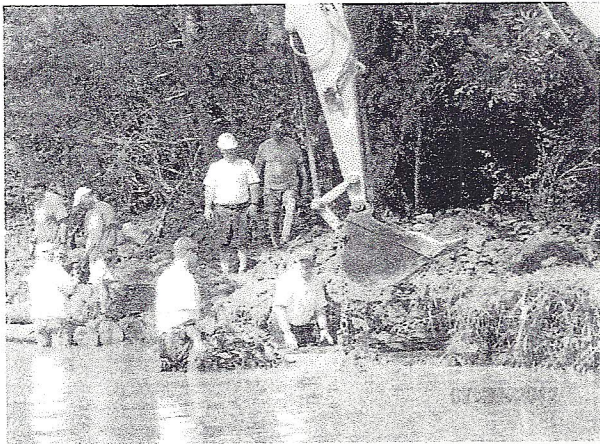


2012 in Review

Twenty-one more un-assessed streams were studied by Dr. Jonathon M. Niles and his interns from Susquehanna University. They also re-assessed eleven streams that were dry or had marginal trout populations in 2011. After studying the data, an interesting question arose: why do certain streams with good water quality lack trout?



Dr. Niles continued his studies on 30 streams to assess the recovery from the 2011 flood. Major Finding: Small trout between 4 and 5.5 inches long that in 2011 composed almost half of the population were largely gone. The good news is that many of the trout smaller than 4 inches (young of the year trout) did survive. With little competition from larger trout, we hope they grow up and start reproducing quickly.



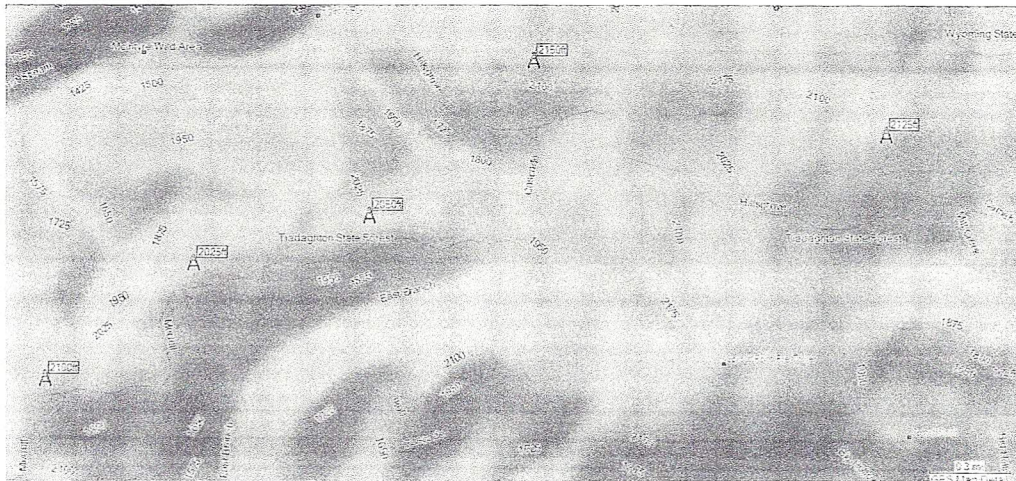
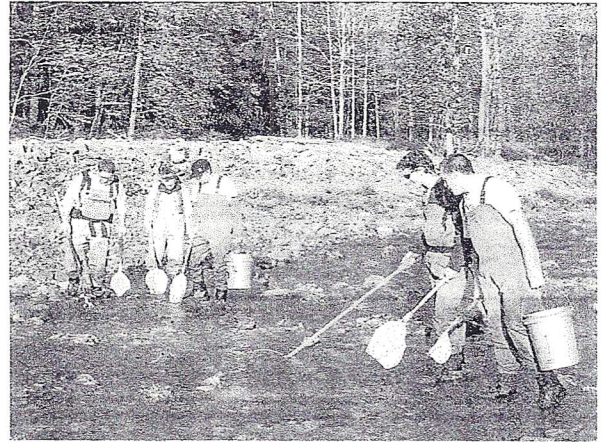
Another stream bank stabilization/trout habitat structure was completed on Wallis Run, thanks to help from Anadarko. A structure that received minor damage in the 2011 flood was also repaired.



One hundred and ten tons of limestone screenings were deposited at an abandoned strip mine on White Ash land in Sullivan County. The limestone raises the pH of the water in a lake that drains into the Loyalsock.

Thanks to the tireless efforts of LCWA Bruno Najaka, the last of the scars left by the coal industry in Sullivan County have been healed.

Ogdonia and Big Bear Creeks are under study to determine the impacts of "stream cleaning" (aka "dredging") on aquatic communities and specifically trout populations. Dr. Mel Zimmerman, biology professor and director of the Clean Water Institute at Lycoming College, has been monitoring these two streams for over ten years. While some of our elected officials are determined to remove of gravel bars and straighten channels, we need to understand the consequences of these activities to protect our Exceptional Value tributaries. An expedient solution to pacify the voters may not be the best solution for the watershed as a whole.



Anadarko appears to be determined to develop the State Land which includes Rock Run and borders parts on our Watershed in Lycoming County. A pipeline blowout of bentonite occurred on August 24, 2013. A MARC 1 Pipeline Trench Failure occurred on August 31, 2012. As one of our members likes to say, "The victim bled to death from a thousand small cuts".

Our 2013 Plans Include

- Continue to work with Dr. Jonathan Niles and Susquehanna University in its efforts to document stream recovery of fish and macroinvertebrate communities.
- Complete an upper watershed conservation plan through the PA Cold Water Heritage Program.
- Continue efforts with acidic water conditions and treatment.
- Continue additional work with the PA Fish and Boat Commission with stream habitat and stabilization projects.
- Work with DCNR on flood debris cleanup on the island at Sandy Bottom.

Who owns the state forests lands in our state?

This question appeared in a recent letter to the editor in the Williamsport Sun Gazette. Governor Tom Corbett does not own our state forest lands, nor does the Department of Environmental Protection, or the Department of Conservation and Natural Resources or any other state entity. It does not belong to the gas well industry or their shareholders. It is the residents of the State of Pennsylvania who own our state lands.

According to the Constitution of the State of Pennsylvania, the mandate for the Governor, our Senators and Representatives, and all of our other state entities is to ensure the following:

"The people have a right to clean air, pure water, and the preservation of the natural, scenic, historic and esthetic values of the environment. Pennsylvania's public natural resources are the common property of all the people, including generations yet to come. As trustee of these resources, the Commonwealth shall conserve and maintain them for the benefit of all the people."

Many of us are concerned about the lack of transparency regarding the negotiations between our government entities and the gas well industry. If our government officials are truly upholding our state's constitution, then shouldn't these negotiations be open to public scrutiny?

Concerns about the "development" of the Clarence-Moore Tract and Rock Run have spurred attorney John Childe of the PA Environmental Defense Fund to pursue the following goals:

- (1). Stop further leasing of State Forest land for oil and gas extraction.
- (2). Require a thorough impact analysis of the current and future development of State Forest and State Parks land for gas and oil extraction.
- (3). Require the return of the \$400,000,000.00 to DCNR taken from leasing State Forest land for gas extraction.
- (4). Establish a de facto trust fund out of the Oil and Gas Fund that will insure protection, restoration and mitigation of our natural resources.
- (5). Put DCNR back in charge of the Oil and Gas Lease Fund and in charge of protecting, restoring and mitigating our natural resources.

These goals are in agreement with the stated purpose of the Loyalsock Creek Watershed Association. Our watershed has been raped twice in the past: once by the logging industry and once by the coal industry. We are still working to remediate the damage done by those two industries. There is private land in our watershed for gas development. The quality of the water in the Loyalsock and its tributaries depend on our state land remaining undisturbed. If the gas well industry wants to be a good neighbor, then it should voluntarily leave our state forests undeveloped for future generations to enjoy.

Keep in Touch

If you would like to keep in touch with what's going on with the LCWA between newsletters, we are now on FACEBOOK. If you would like to email us regarding questions or suggestions, our official email address is loyal2thesock@gmail.com.

New Banner for Loyal to the 'Sock

The new banner was created by director Ruth Rode. It shows a hiker enjoying the view from the Loyalsock Canyon Vista. In the October 2010 issue, *Back Packer Magazine* rated the Loyalsock Trail as one of the **top ten 50-mile thru-hikes in the United States!!!**

End of the World?

The fact that the world did not end on December 21, 2012, was a great relief to us all. The public interest in the prediction of the "end of the world" by the Mayans resulted in some unexpected and welcome publicity for the Loyalsock Watershed. Rather than a description of destruction by fire or ice, the good folks at Wikipedia.org celebrated the "end of the world" by greeting everyone who logged on to the English language edition with an excellent 20 page e-article all about the Worlds End State Park, complete with great color photographs and a scholarly 80 item list of references. (http://en.wikipedia.org/wiki/Worlds_End_State_Park)!

The Mayans were mistaken about the timing for destruction of the whole planet Earth, but for destruction of our state forests and parks by development, they didn't miss by much.

2013 Loyalsock Creek Watershed Association Membership

The LCWA is a 501(c)3 non-profit organization whose members care about maintaining and improving the natural resources of the Watershed. To keep up with events in your watershed, become a member and receive our newsletter "Loyal to the 'Sock" and reminders of upcoming events.

Renewal New Member

Please send me newsletters and updates by

Name _____

Mail E-mail Both

Address _____

\$10 - Loyalists (our loyal members)

\$25 - Guardians (of our streams)

\$50 - Protectors (of our forests)

\$100 - Defenders (of our Watershed)

\$200 - Historians (of our past)

E-mail: _____

When you mail something to us, please be sure to address envelope to the **Loyalsock Creek Watershed Association** and not just LCWA. Our mail box is right next to the **Lycoming County Water Authority** (also LCWA) and too much of our mail ends up in the wrong box.

Loyalsock Creek Watershed Association, P. O. Box 216, Montoursville, PA 17754