

Susquehanna Ripples



Newsletter of the Susquehanna Chapter of Trout Unlimited #044

May 2013

Mission

**Working to conserve, protect
and restore Central
Pennsylvania's coldwater
fisheries and their watersheds**

Officer and Directors

President: David Craig
Email: davsalc@comcast.net
Home: 570-326-1002
Cell: 570-971-4744

Vice President: Walt Nicholson
Email:
walt.nicholson10@gmail.com

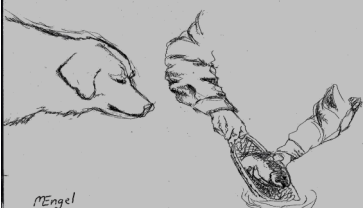
Secretary: Walt Nicholson

Treasurer: Bob Baker
Email: rlbaker@earthlink.net
Home: 570-321-7806

Board of Directors

Joe Radley
Scott Rupert
Kevin McJunkin

Newsletter Editor/Webmaster
Bob Baker



WNEP SPORT SHOW A GREAT SUCCESS!

Submitted by David Craig, President

We are please to report that the recycled fishing equipment sale at the Pennsylvania Outdoor Life Expo 13 at the Lycoming mall was a great success! Our net profit from the show exceeded \$6,000, which was beyond our expectations. We sold thousands of flies, and nearly all of the rods, along with the majority of other items we had for sale. We also picked up several new members as a result of our visibility and pleasant discussions. Twelve of our members participated in setting up and manning the show, and thanks to all who helped out. Over 80 man-hours were involved in preparations, and about 120 man-hours were involved in staffing at the show. Those involved had a great time seeing old friends and making some new ones.

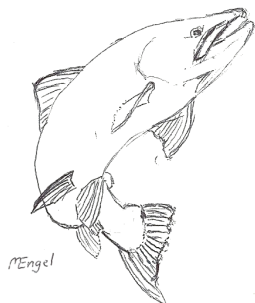
Special thanks are due to our three major donors of equipment, without which our sale would not have been possible. Don Neyhart made a huge donation of his life-long collection of fishing equipment of all kinds. Tom Finkbiner of Slate Run Tackle Shop donated thousands of flies, which sold like hotcakes. Don Daughenbaugh contributed an assortment of equipment and materials, which put the icing on the cake. Special thanks to Don Jacobs of WNEP TV for donating to us a great booth and squeezing us in to the show at the last minute. The boost he gave us on his show surely helped to draw visitors to our booth.

The concept of recycling fishing gear is now a proven success. All members should consider donating their surplus equipment to the chapter. When your fishing days are over, please consider passing on your gear to the chapter as Don Neyhart did, to help insure our future and the future of the activity we love.

Update Your Information Please

Our membership currently stands at 226 members and 87 members either do not have an email address or have chosen not to give it to Trout Unlimited. We sent 139 emails to members recently and 56 were returned as undeliverable and continue to find bad mailing address's. We obtain your contact information (mailing address, phone number, and email address) from Trout Unlimited and use this information as needed to communicate with you. We do not share your information with anyone and only the leaders of the Chapter have access to this information.

We are asking each of you to go to the Trout Unlimited website, log in and check your contact information. If you find errors, please make the changes. You can also send your contact information: full name, mailing address, phone number and email address to rlbaker@earthlink.net and I will check the information and update as necessary. You can also give us the information at any Chapter event. Thank you for your help.



Unassessed Waters Project

Submitted by Joe Radley

The Chapter meeting on April 10 had Bob Weber, Fisheries Biologist with the PF&BC, detailing the process for doing the surveys for the Unassessed Waters Initiative in our area. The Susquehanna chapter of TU has been invited to be one of two TU Chapters (the other is Allegheny in Western PA) in the state to initiate the survey.

Bob is asking you to fish these unassessed waters this spring and summer and complete a one page report on your findings. He brought lists and maps of the unassessed waters for Lycoming, Sullivan, and northern Union counties. Within this area, there are over 2100 unassessed streams! The PF&BC is focusing on streams likely to be impacted by gas wells or other development.

Any stream you find to have a trout population will be given a priority for in depth assessment by the PF&BC or one of the colleges working with them. Prior assessments have found a good number of Class A trout streams. These are eligible for classification as HQ or EV, giving them high levels of protection.

So, how do you go about surveying streams? First, always make sure if you have legal access. If a stream is not public land, always seek out the owner and ask permission. Give an explanation of your purpose and let the owner, if allowed on, know of your results. Bob said, in prior years, they almost always were given

permission to come on the property. If you have a computer, go to www.coldwaterheritage.org. Click on "Unassessed Waters Initiative" on the left side of the screen. You can view maps and lists of the streams. Unassessed streams are in red and assessed ones are in blue. Do not submit any surveys on the blue streams. Print out the survey form and select the streams you plan to fish. Go fishing! Please complete the form as soon as possible after fishing, making sure you give clear identifiers of the stream. The follow-up assessments need specific location to complete their survey. Many streams are listed as unnamed tribs to another stream so a GPS would be useful as lists include coordinates for the stream mouth.

If you don't have access to a computer, call Joe Radley, 326-1851, to set up a time to see the maps and lists plus get copies of the survey form. Be mindful that Joe will likely be fishing when you call so make sure you leave a number for call back.

When you have completed the form, please send it in so it can be forwarded to the PF&BC. **DO NOT SUBMIT THE FORMS DIRECTLY TO THE PF&BC.** You can mail the forms to: Susquehanna Chapter of TU, PO Box 1132, Williamsport, PA 17703-1132 or email to centz@lyco.org.

If you want, survey a stream twice, say May and August, to see if it keeps trout continuously. Please submit forms as soon as you have them done. We will put surveyed streams on the chapter website so we can avoid duplication. We will stop surveying on 9/30, for this year. All reports have to be in to the PF&BC by 10/31.

Thanks for your participation and helping wild trout. The maps, streams lists, and survey forms are available on our website under the documents section.

Antes Creek Fish Outing



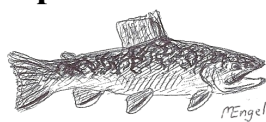
The Chapter will be having a campout and fishing on Antes Creek on May 3 and 4. Andy Lyons, President of the Nippenose Valley Watershed Association, has offered the use of his property for this event. **This is open to members only and registration is required with a deadline of April 26, 2013. No registrations will be accepted after this date.**

The times for this event are 12 noon on May 3 until 1 pm May 4. Lunch is on your own Friday and Mr. Lyons will be hosting a pig roast Friday evening free of charge and camping is available on the property if you wish to camp. There are accessible areas of Antes Creek available for those individuals who have mobility issues and there will be individuals available to assist in guiding and basic instruction in fly fishing. This is a fly fishing only event and no bait is allowed. Additionally we will be practicing catch and release only during this event. To register, or if you have any questions, please call Joe Radley at 570-326-1851.

Website Link Corrected

It was recently brought to our attention that there was an error in our web address when attempting to go to our site via the Pennsylvania Trout Unlimited Web Site. The necessary correction has been made and we thank you for bringing this to our attention. When problems or errors are found on our website or Susquehanna Ripples, please notify Bob Baker at rlbaker@earthlink.net

Recipe of the Month



Tomato - Orange Fish Fillets

2 tablespoons extra virgin olive oil
1/2 teaspoon dried thyme
1 (14.5 oz) can petite diced tomatoes in juice
3/4 cup orange juice
4 fresh fish fillets
Salt and pepper to taste
2 teaspoons finely chopped cilantro

In a large saucepan, cook oil and thyme over medium high heat. Pour tomatoes with juice and orange juice into saucepan and stir to mix thoroughly.

Bring the mixture to simmer; cook uncovered approximately 10 - 15 minutes or until the mixture thickens slightly.

Season the fish fillets with salt and pepper and gently add them to the tomato/orange mixture. Cover and cook 3 minutes. Remove the lid and cook until the fish flakes easily with a fork and the sauce has thickened.

To serve, carefully remove a fish fillet from pan and spoon 1/4 of the tomato/orange mixture over the fillet. Lightly sprinkle each fillet with 1/2 teaspoon chopped cilantro.

Celebrate Fish: Members Greatest Recipes: North American Fishing Club. Recipe submitted by Steven C. Baker, Colorado Springs, Colorado

Chapter Elections

Elections were held at the April 10 meeting and David Craig was elected President; Walt Nicholson Vice President; Bob Baker Treasurer; and Kevin McJunkin, Joe Radley and Scott Rupert were elected Directors. Congratulations to you all. It is not possible for the President to do a satisfactory job as Secretary while running meetings. Therefore, Walt Nicholson has accepted appointment as Secretary until such time as an election can be held for that position. Bob Baker has agreed to perform the

duties of Secretary in the event of Walt's absence. Submitted by David Craig

For Men Only

I saw her swimming in the brook
A moment swift and fleeting;
And from the shock of that brief look
My heart almost stopped beating.

I worked my way around the trees
To where the view was clearer,
And then on trembling hands and knees
I edged a little nearer.

I never saw such perfect lines
As she was there displaying
Beneath the shade of spreading pines,
In languid splendor playing.

Her twists and turns were full of grace,
Her body smoothly molded;
I know that joy showed on my face
As each new charm unfolded.

And when she floated with the stream
The sight was most entrancing;
Her wondrous body seemed to gleam
From sunbeam softly glancing.

I yearned for her with heart and soul,
And then I fell to wishing -
For I had neither hook or pole
And Trout are caught by fishing!
Pennsylvania Angler 1937



Did You Know

When someone becomes a member of Trout Unlimited at the Introductory Price of \$17.50, our Chapter receives \$15.00 from their dues. We do not receive any money from renews



Trout

Inches	Brown Weight	Rainbow Weight	Brook Weight
7	0.15	0.16	0.14
8	0.21	0.23	0.20
9	0.30	0.32	0.29
10	0.40	0.41	0.39
11	0.52	0.55	0.50
12	0.67	0.70	0.68
13	0.85	0.90	1.88
14	1.05	1.06	1.10
15	1.28	1.37	1.80
16	1.53	1.76	2.26
17	1.92	1.96	2.59
18	2.33	2.35	3.19
19	2.68	3.03	
20	3.06	3.45	
21	4.05	3.63	
22	4.48	3.80	
23	5.45	4.63	
24	5.84	5.29	



Crackleback Dry Fly

Hook: Dry fly, 2X long, sizes 12-18 *MEngel*

Thread: Black

Body: Pale yellow dubbing

Shellback: Peacock herl

Hackle: Furnace, palmered over body

The Crackleback was developed by Ed Story as a dry fly version of the classic woolly worm

Fly Pattern Trading Cards by Toppin' the Waders Trading
www.flyshack.com

Oswayo and Bellefonte Hatcheries to Stay Open

The Pennsylvania Fish and Boat Commission (PFBC) voted at a special public meeting on March 22, 2013 to keep the Oswayo and Bellefonte hatcheries open for at least two more years while the agency pursues a long-term funding source through the General Assembly.

"Since the board of commissioners voted in January to close the two hatcheries, staff and Commissioners have met with members of the General Assembly to try to identify opportunities to secure long-term funding sources," said Board President Steve Ketterer. "As a result, we have voted to keep the hatcheries open while we pursue these opportunities."

Commissioner Glade Squires stated "I move that we restore funding for the continued operation of the Oswayo and Bellefonte trout hatcheries until the July 2015 Pennsylvania Fish and Boat Commission meeting and that we continue to work with senators and representatives to secure funding for the other areas of our budget previously identified to be reduced or eliminated."

The motion passed by a unanimous vote. The PFBC must still come up with 9 million dollars over the next four years and is working to try and find ways of either saving that money or finding revenue sources. (obtained from PFBC website)

DEP Releases Susquehanna River Sampling Plan

The Department of Environmental Protection released a work plan outlining intensive efforts to continue studying and sampling dozens of locations in the Susquehanna River basin throughout 2013.

DEP's ongoing efforts include analysis of water quality, water flow, sediment, pesticides, hormones, in-

vertebrates, fish tissue and other areas of study. Portions of the study will focus on areas of the river or its tributaries where smallmouth bass reproduce.

"The scientists and experts here at DEP have, quite simply, done an incredible amount of work on this complex issue over the past few years," DEP Secretary Mike Krancer said. "Our staff will continue this comprehensive, fact-based approach, working with our partners at the Fish and Boat Commission, the Susquehanna River Basin Commission and the U.S. Geological Survey.

"The actual cause or causes of the issues we have seen with the smallmouth bass have not yet been determined or linked to any particular water quality issue," he said. "But DEP is dedicated to working with our partners to find the answer."

The agency's sampling efforts will be focused on sites along the Susquehanna at Marietta, City Island and Sunbury and along the Juniata River at the Lewistown Narrows and Newport. A site along the Delaware River near Trenton, NJ, will be used as a control site.

Staff will test for various water quality parameters, like dissolved oxygen, temperature and pH, at multiple sites in the Susquehanna. Samples of fish, mussels and macro invertebrates, such as mayflies, will also be collected.

"Our efforts span the entire watershed," Krancer said. "Sampling across the Susquehanna River basin allows us to identify and accurately measure the effects of various influences on the river. This research will provide data and help us decide what next steps, if any, are needed to protect our waterways."

Fish tissue from bass collected during spawning season will be analyzed for pesticides, PCBs and metals. DEP will also work with the U.S. Geological Survey to analyze fatty tissue from healthy and diseased fish to determine the effects of different environmental factors.

For more information, visit DEP's

Susquehanna River Study Updates webpage at http://www.portal.state.pa.us/portal/server.pt/community/water_quality_standards/10556/Susquehanna_River_Study_Updates/1449797.

The above article was taken from a news release by DEP on March 19, 2013 at the same web address above.

Proposed Slot Limits on Portion of Penn's Creek

PFBC Commissioners approved a notice of proposed rulemaking to establish a harvest slot limit on Section 03 of Penn's Creek, which stretches from the confluence with Elk Creek downstream seven miles to 650 yards downstream of Swift Run. The harvest slot limit would replace the current All-Tackle Trophy Trout regulations.

The change is designed to improve the size structure of the wild trout population in this section. Under the proposed special regulation, anglers could harvest two trout per day provided the trout are at least seven inches but less than 12 inches in length. The regulation would apply from opening day of trout season through Labor Day, with catch and release for the remainder of the year. All tackle would be permitted.

The PFBC requests all interested parties to express their comments and comments can be filed electronically on the PA Fish and Boat Commission site or mailed to the Commissioners. The Public Comment



Susquehanna Chapter of Trout Unlimited

Treasurer Report for February 1, 2013 - February 28, 2013

Submitted by Bob Baker, Treasurer

Checking Account

Beginning Balance February 1, 2013 \$ 408.37

Deposits:

Sale of Fly Tying Material \$ 25.00
Transfer from Savings \$1,000.00

Total Deposits \$1,025.00

Expenses:

Bob Baker \$ 147.76
2/13 printing Susquehanna Ripples \$131.10
1 box mail seals \$8.29
Sales tax \$8.37
First United Methodist Church Youth Program \$ 25.00
In Memory of Evelyn Rinn

Total Expenses: \$ 172.76

Checking Account Balance \$1,260.61

Savings Account

Beginning Balance February 1, 2013 \$6,495.42
Interest Payment February 15, 2013 \$ 0.28
Transfer to Checking Account \$1,000.00
Ending balance February 28, 2013 \$5,495.70

Checking Account Balance \$1,260.61

Savings Account Balance \$5,495.70

Total money in bank \$6,756.31

Treasurer Report for March 1, 2013 - March 31, 2013

Submitted by Bob Baker, Treasurer

Checking Account

Beginning Balance March 1, 2013 \$1,260.61

Deposits:

Sale of Fishing Accessories \$ 361.00
New Member Rebate for 2012 45.00
Membership 35.00
Donation 5.00

Total Deposits \$ 446.00

Expenses:

First Presbyterian Church (utility donation) \$ 100.00
Bob Baker 363.00
Printing of March Ripples 138.00
Printing of April Ripples 204.00
1 box mail seals 8.29
Sales tax 12.74

Bill O'Connor \$ 3.75

Postage for same day delivery of Expo Contract

Trout Unlimited 35.00

Two New memberships

Total Expenses: \$ 501.75

Checking Account Balance \$1,204.86

Savings Account

Beginning Balance March 1, 2013 \$5,495.42
Bank Service Charge March 8, 2013 - 1.00
Interest Payment March 15, 2013 \$ 0.22
Ending balance March 31, 2013 \$5,494.20

Checking Account Balance \$1,204.86

Savings Account Balance \$5,494.20

Total money in bank \$6,699.06

PA Outdoor Life Expo / Fishing Accessory Sale

Submitted by Bob Baker, Treasurer

Results

Pre Show Sales \$ 414.00
Thursday April 4, 2013 \$2,514.00
Friday April 5, 2013 \$1,680.00
Saturday April 6, 2013 \$1,055.00
Sunday April 7, 2013 \$ 362.00
Sales at Chapter Meeting April 10 \$ 51.00
Refund from return of storage totes \$ 25.00
Total Income for Sale of Fishing Accessories **\$6,101.00**

Expenses:

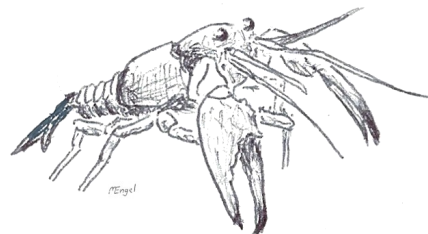
Neece paper Company (150 plastic grocery bags) \$ 4.60
David Craig 71.99
Table covers / aprons and fly cups \$61.43
Picture frames \$10.56

Total Expenses: \$ 76.59

Overall profit from Outdoor Expo \$6,024.41

Report Violations

If you see a violation, or suspect a violation has, or is occurring, please report them to the North central Law Enforcement Office at 814-359-5250. Give as much information as possible; the stream name, location, description of a vehicle along with a license plate number, description of individual (s), date & time and a call back number. The WCO will return your call or get in touch with you should they need further information.





Susquehanna Chapter of Trout Unlimited
PO Box 1132
Williamsport, PA 17703 - 1132

Non-Profit
Organization
U.S. Postage
PAID
Williamsport, PA 17701
Permit No. 159

susquehannatu.wordpress.com

Upcoming Events

See our webpage for more local events

April 26, 2013

Last Day to Register for May
3 -4 Fish Outing

May 3 and 4, 2013

Fish outing and Campout on
Antes Creek
(Members Only)

June 15, 2013

Opening Day of Bass

July 15 - 16, 2013

PFBC Meeting

June 28, 2013

Deadline to submit items for
July Susquehanna Ripples

September 3, 2013

Extended Trout Season Starts



September 11, 2013
Chapter Meeting

September 30 - October 1, 2013
PFBC Meeting

October 9, 2013
Chapter Meeting

November 13, 2013
Chapter Meeting

WELCOME NEW MEMBERS



Chapter meetings

Held on the 2nd Wednesday of each month and are open to the public and begin at 7:30 pm. Meetings are held at the First Presbyterian Church of Williamsport in the Fellowship Hall, 102 East 3rd Street, Williamsport. Parking is in the rear of the Church along Mulberry Street.

No meetings are held in May, June, July, August or December